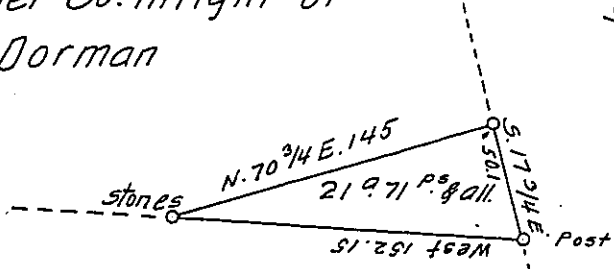


Laurelton Lumber Co. in right of  
Lewis Dorman



Laurelton Lumber Co. in right of  
Charles Hall

Laurelton Lumber Co. in right of  
George Calhoun

A Draft of a tract of land situated in the Township of Haines and  
County of Centre, containing 21 acres, 71 perches and allowance  
of six per cent. for roads, etc. Surveyed the 10<sup>th</sup> day of July, 1902,  
in pursuance of a warrant granted to Charles Steele, dated the  
17<sup>th</sup> day of April, 1902.

To James W. Latta, Esq.,  
Secretary of Internal Affairs.

H. B. Hering  
County Surveyor.

IN TESTIMONY that the above is a copy of the original remaining on file in  
the Department of Internal Affairs of Pennsylvania, made  
conformably to an Act of Assembly approved the 16th day of  
February, 1833, I have hereunto set my Hand and caused  
the Seal of said Department to be affixed at Harrisburg,  
this twentieth day of March 1907.

*Loaco B. Brown*  
Secretary of Internal Affairs.